



# GMT MONTHLY MEMBERSHIP PROGRESS REPORT

Results as of: 4/30/2025

Multiple District 21

LOCATION: ARIZONA

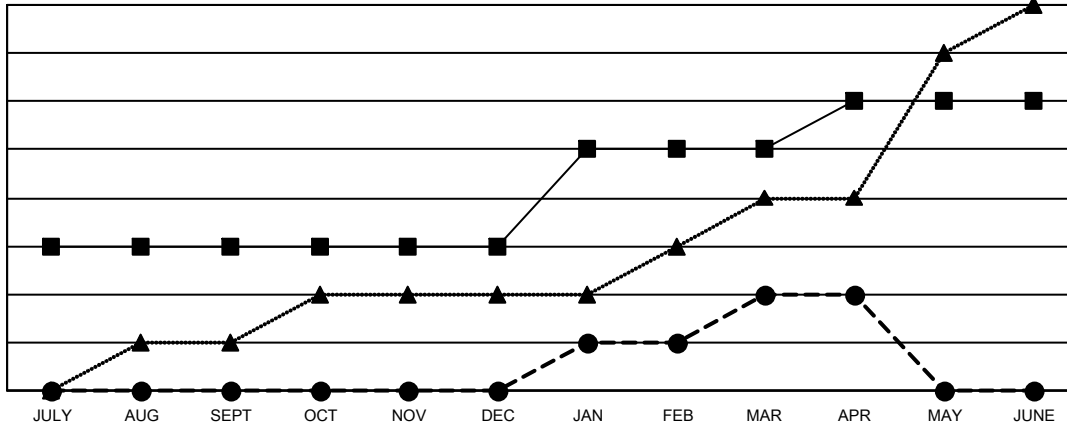
GMT: OPEN

GMT CA 1

| Clubs                 |               |           |               |
|-----------------------|---------------|-----------|---------------|
| RESULTS FOR 2024-2025 |               |           |               |
| QUARTER               | NEW CLUB GOAL | NEW CLUBS | DROPPED CLUBS |
| JULY/AUG/SEPT         | 3             | 0         | 1             |
| OCT/NOV/DEC           | 0             | 0         | 3             |
| JAN/FEB/MAR           | 2             | 2         | 0             |
| APR/MAY/JUNE          | 1             | 0         | 1             |

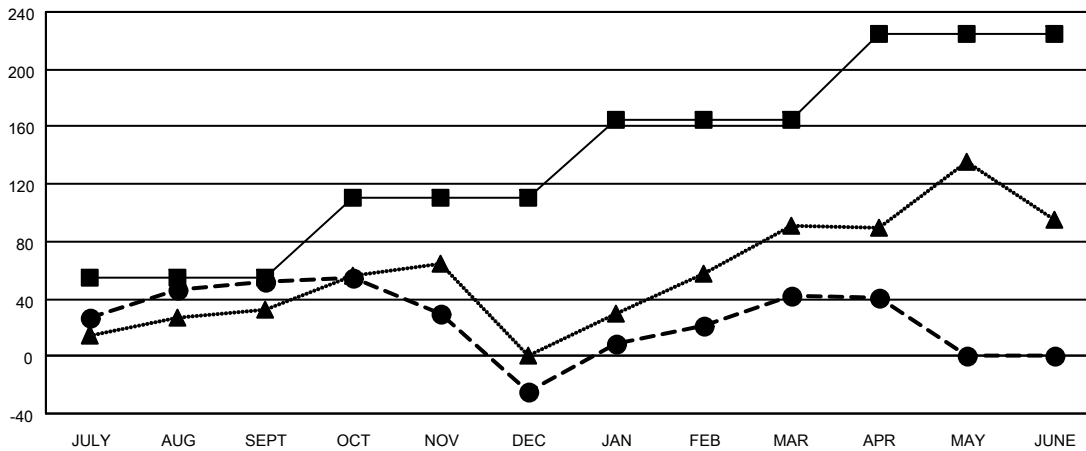
| Members               |                        |                      |  |
|-----------------------|------------------------|----------------------|--|
| RESULTS FOR 2024-2025 |                        |                      |  |
| QUARTER               | MEMBER GROWTH NET GOAL | MEMBER GROWTH ACTUAL | DROPPED MEMBERS ACTUAL (including transfers) |
| JULY/AUG/SEPT         | 55                     | 142                  | 64   |
| OCT/NOV/DEC           | 55                     | 65                   | 125  |
| JAN/FEB/MAR           | 55                     | 176                  | 83   |
| APR/MAY/JUNE          | 60                     | 32                   | 30   |

GOALS AND ACTUAL NEW CLUBS CUMULATIVE



- - CURRENT YEAR GOALS FOR NEW CLUBS
- - CURRENT YEAR ACTUAL NEW CLUBS
- ▲ - LAST YEAR ACTUAL NEW CLUBS

GOALS AND ACTUAL MEMBERS CUMULATIVE



- - MEMBER GROWTH NET GOAL
- - MEMBER GROWTH ACTUAL
- ▲ - LAST YEAR MEMBERSHIP ACTUAL

|                        |   |                                   |
|------------------------|---|-----------------------------------|
| DROPPED CLUBS: 5       | 64 CLUBS OF 108 ADDED 1 OR MORE NEW MEMBERS               | <b>GENDER DISTRIBUTION</b>        |
|                        |   | MALE 1,320 (50.59%)               |
|                        |   | FEMALE 1,289 (49.41%)             |
| <b>DROPPED MEMBERS</b> | <a href="#">CLICK HERE FOR CUMULATIVE MEMBERSHIP DATA</a> | TOTAL FAMILY UNIT MEMBERS 0       |
| DECEASED 21            |   | FAMILY MEMBERS PAYING HALF DUES 0 |
| CLUB CANCELLED 27      |   |                                   |
| OTHER 249              |   |                                   |
| <b>TOTAL 297</b>       |   |                                   |